

APPROVED BY:

DATE:

Kenneth Eubank 6/29/94

CITY ENGINEER, R.C.E. 13456

CITY OF MARTINEZ

Catch Basin
Stencil

SCALE: NONE
STD. DRWG.
NO.
SD-1

SHEET 1 OF 2

NOTE: Stencil kits will be provided by City upon receipt of a refundable deposit.

SPECIFICATIONS

FISH: LENGTH: 20 1/2 INCHES
HEIGHT: 5 INCHES

LEGEND: 1 INCH LETTERING

MESSAGE: NO DUMPING!
FLOWS TO CREEK

COLORS: FISH: AERVO, LIGHT BLUE, GROUND TRAFFIC COATING*
MESSAGE: AERVO, WHITE, GROUND TRAFFIC COATING*
* = OR APPROVED EQUAL

APPLICATION PROCEDURE:

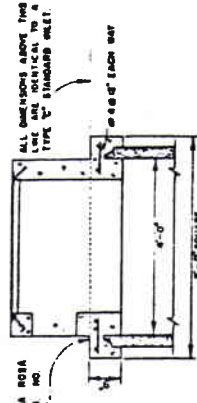
1. Brush area on top of curb to be stenciled with wire brush.
2. Sweep area with whisk broom.
3. Place fish stencil on top of curb (see note below for stencil orientation).
4. Mark curb along border of stencil with masking tape.
5. Shake paint can and apply light blue paint using long sweeping motion. Do not over apply paint.
6. Let paint dry to touch.
7. Align message stencil with masking tape. Blue paint should be visible under all letters.
8. Shake paint can and apply white paint using long sweeping motions. Do not over apply.

STENCIL ORIENTATION:

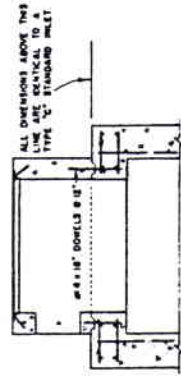
1. No sidewalks, message directed toward street.
2. Existing sidewalks, message directed toward sidewalk.

APPROVED BY: <i>Kenneth Eichen</i> CITY ENGINEER, R.C.E. 13456	DATE: <i>6/29/94</i>	CITY OF MARTINEZ	SCALE: NONE
		Catch Basin Stencil	STD. DRWG. NO. SD-1
			SHEET <u>2</u> OF <u>2</u>

WHEN INLET IS PRECAST, USE 36" DIAMETER PRECAST MANHOLE RINGS, SANTA ROSA COUNTY STANDARD PLAN CC 3013, OR EQUIVALENT.

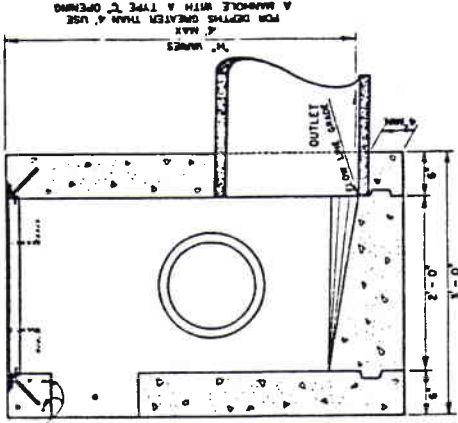


SECTION OF TYPE "C" OPENING ON PRECAST MANHOLE BARREL
REFER TO STANDARD PLAN CC 3013

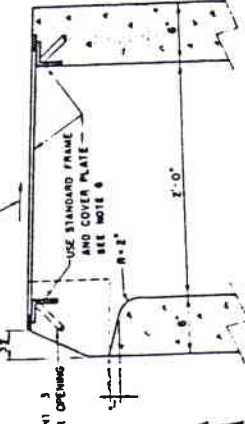


SECTION OF TYPE "C" OPENING ON MANHOLE BASE
REFER TO STANDARD PLAN CC 3013

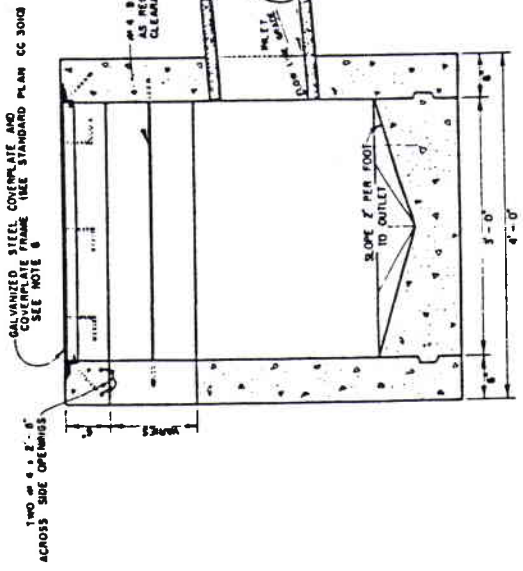
NOTES:
1. CONSTRUCTION DETAILS ARE OPTIONAL UNLESS SHOWN. OTHER LOCATIONS ARE SUBJECT TO THE APPROVAL OF THE ENGINEER. SEE DIMENSIONS - 2 1/2" x 1 1/2".
2. CLEARANCE ABOVE THE INLET SHALL NOT INTERFERE WITH THE MANHOLE COVER OR THE INLET.
3. ALL DIMENSIONS ABOVE THIS LINE ARE IDENTICAL TO A TYPE "C" STANDARD INLET.
4. ALL DIMENSIONS ABOVE THIS LINE ARE IDENTICAL TO A TYPE "C" STANDARD INLET.
5. ALL DIMENSIONS ABOVE THIS LINE ARE IDENTICAL TO A TYPE "C" STANDARD INLET.
6. ALL DIMENSIONS ABOVE THIS LINE ARE IDENTICAL TO A TYPE "C" STANDARD INLET.
7. ALL DIMENSIONS ABOVE THIS LINE ARE IDENTICAL TO A TYPE "C" STANDARD INLET.
8. ALL DIMENSIONS ABOVE THIS LINE ARE IDENTICAL TO A TYPE "C" STANDARD INLET.
9. ALL DIMENSIONS ABOVE THIS LINE ARE IDENTICAL TO A TYPE "C" STANDARD INLET.
10. ALL DIMENSIONS ABOVE THIS LINE ARE IDENTICAL TO A TYPE "C" STANDARD INLET.



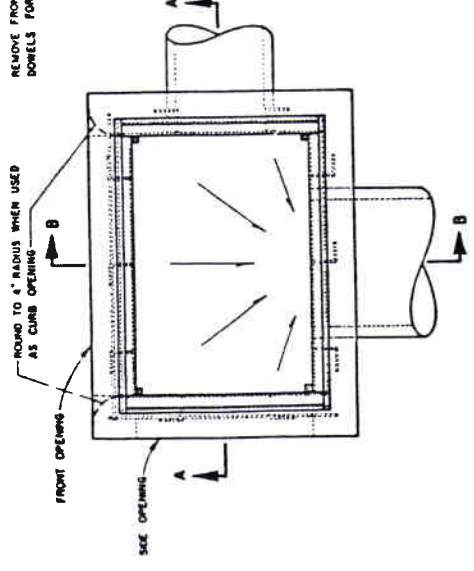
SECTION B-B
CURB OPENING MODIFICATION



SECTION B-B
CURB OPENING MODIFICATION



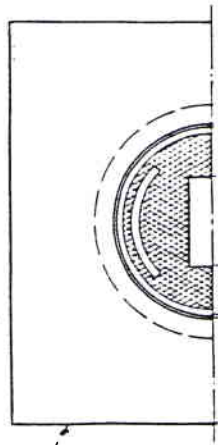
SECTION A-A
CURB OPENING MODIFICATION



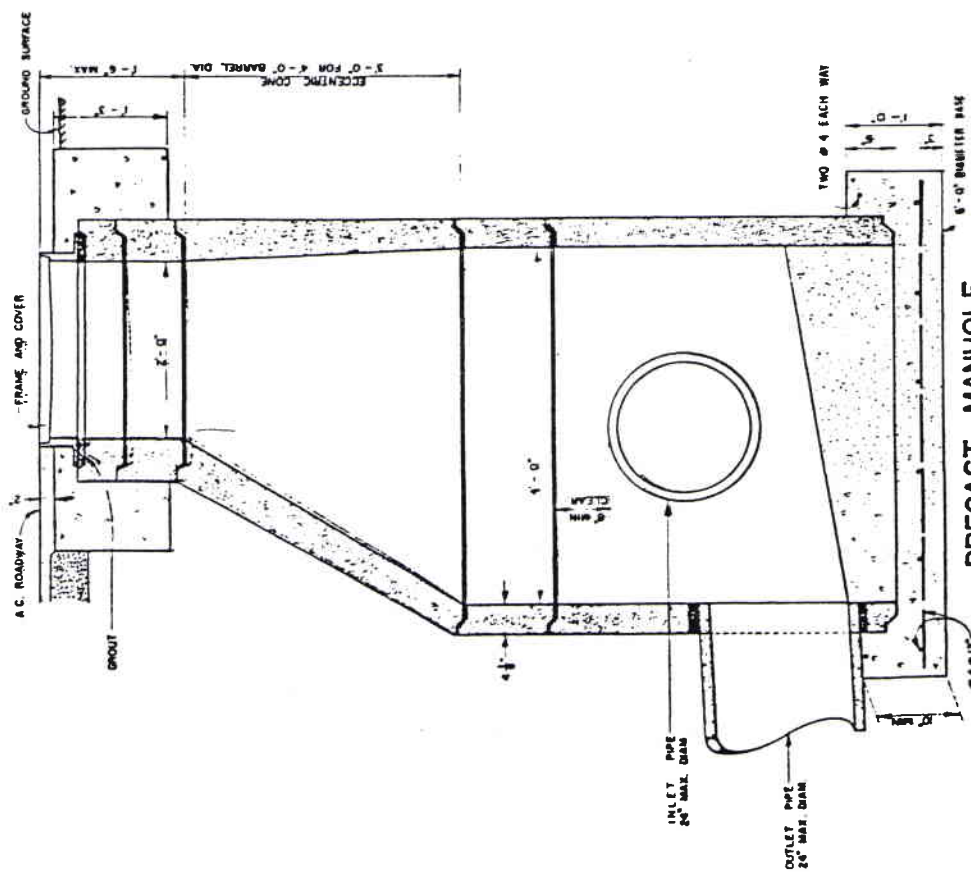
PLAN
CURB OPENING MODIFICATION

CONTRA COSTA COUNTY PUBLIC WORKS DEPARTMENT MARTINEZ, CALIFORNIA	
STANDARD PLAN	
TYPE "C" INLET	
NO.	DATE
1	2-1-67
2	9-5-68
3	4-25-76
4	2-24-79
5	8-11-80
6	1-11-81
7	1-11-81
8	1-11-81
9	1-11-81
10	1-11-81
11	1-11-81
12	1-11-81
13	1-11-81
14	1-11-81
15	1-11-81
16	1-11-81
17	1-11-81
18	1-11-81
19	1-11-81
20	1-11-81
21	1-11-81
22	1-11-81
23	1-11-81
24	1-11-81
25	1-11-81
26	1-11-81
27	1-11-81
28	1-11-81
29	1-11-81
30	1-11-81
31	1-11-81
32	1-11-81
33	1-11-81
34	1-11-81
35	1-11-81
36	1-11-81
37	1-11-81
38	1-11-81
39	1-11-81
40	1-11-81
41	1-11-81
42	1-11-81
43	1-11-81
44	1-11-81
45	1-11-81
46	1-11-81
47	1-11-81
48	1-11-81
49	1-11-81
50	1-11-81
51	1-11-81
52	1-11-81
53	1-11-81
54	1-11-81
55	1-11-81
56	1-11-81
57	1-11-81
58	1-11-81
59	1-11-81
60	1-11-81
61	1-11-81
62	1-11-81
63	1-11-81
64	1-11-81
65	1-11-81
66	1-11-81
67	1-11-81
68	1-11-81
69	1-11-81
70	1-11-81
71	1-11-81
72	1-11-81
73	1-11-81
74	1-11-81
75	1-11-81
76	1-11-81
77	1-11-81
78	1-11-81
79	1-11-81
80	1-11-81
81	1-11-81
82	1-11-81
83	1-11-81
84	1-11-81
85	1-11-81
86	1-11-81
87	1-11-81
88	1-11-81
89	1-11-81
90	1-11-81
91	1-11-81
92	1-11-81
93	1-11-81
94	1-11-81
95	1-11-81
96	1-11-81
97	1-11-81
98	1-11-81
99	1-11-81
100	1-11-81

CONTRA COSTA COUNTY
PUBLIC WORKS DIRECTOR - R.E. CEAT NO 1997



CONCRETE IN CURB, 4'-6" SQUARE, SHEET METAL PAVEMENT FORM VERTICAL EDGES AT TOP CLASS III CONCRETE



PRECAST MANHOLE WITH TYPE I BASE

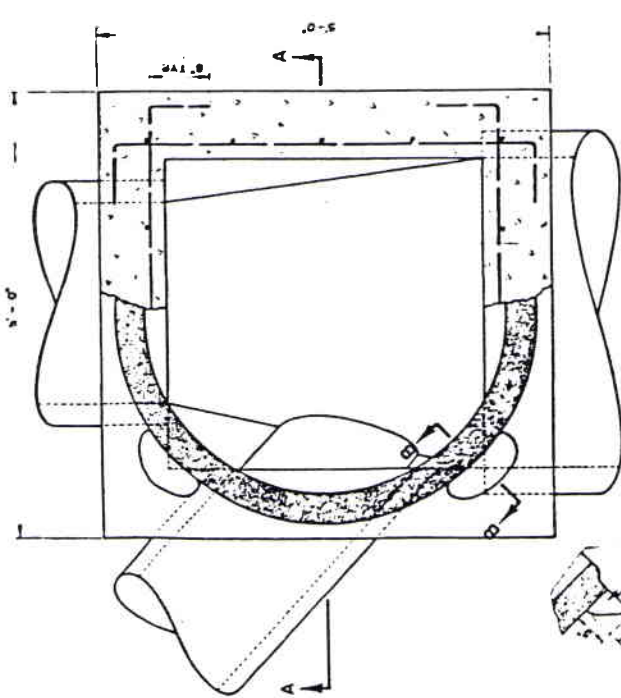
11-11-01

- NOTES:**
1. ALL REINFORCED CONCRETE SHALL BE CLASS "A".
 2. ALL CONCRETE JOINTS SHALL BE CLEANED, WETTED, AND MORTARED, PROOF TO SETTING BEST SECTION JOINTS SHALL THEN BE PATCHED, TROWELED, AND BRUSHED SMOOTH.
 3. TYPE I MANHOLE BASES ARE FOR USE WITH PIPES TO 24" IN DIAMETER AND WHERE THERE IS NO CONCERN FOR THE PROTECTION OF THE MANHOLE FROM OVERLOADING. TYPE II MANHOLE BASES (SHEET CC-3021) ARE FOR USE WITH PIPES TO 48" IN DIAMETER. TYPE III MANHOLE BASES (SHEET CC-3022) ARE FOR USE WITH PIPES TO 60" IN DIAMETER. MANHOLE BASES FOR PIPES LARGER THAN 60" IN DIAMETER SHALL REQUIRE A SPECIAL DESIGN.
 4. USE OF EXTENSION RINGS IS LIMITED BY 18" MANHOLE THROUGH LENGTH.
 5. FRAME AND EXTENSION RINGS MUST BE REINFORCED BY AVAILMENT OR CONCRETE BLOCK.
 6. MANHOLE COVER FRAME SHALL BE ADAPTED TO CONFORM TO BRIMS AND CROSS-SLAPS OF STANDARD MANHOLE FRAME AND COVER, SEE STANDARD PLAN CC 3024.

APPROVED: *March 26, 1963*
 PUBLIC WORKS DIRECTOR - R. E. CERT. NO. 3708

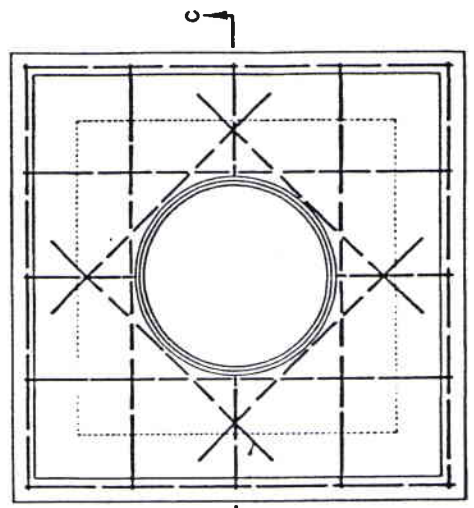
CONTRA COSTA COUNTY PUBLIC WORKS DEPARTMENT SANTARFE, CALIFORNIA	
STANDARD PLAN PRECAST MANHOLE	
AND TYPE I BASE	
NO.	DATE
1	11-11-74
2	10-21-88
REVISION DESCRIPTION	
1	Revised to show 6" cover and 6" depth
2	Revised to show 6" cover and 6" depth
3	Revised to show 6" cover and 6" depth
4	Revised to show 6" cover and 6" depth
5	Revised to show 6" cover and 6" depth
6	Revised to show 6" cover and 6" depth
7	Revised to show 6" cover and 6" depth
8	Revised to show 6" cover and 6" depth
9	Revised to show 6" cover and 6" depth
10	Revised to show 6" cover and 6" depth
11	Revised to show 6" cover and 6" depth
12	Revised to show 6" cover and 6" depth
13	Revised to show 6" cover and 6" depth
14	Revised to show 6" cover and 6" depth
15	Revised to show 6" cover and 6" depth
16	Revised to show 6" cover and 6" depth
17	Revised to show 6" cover and 6" depth
18	Revised to show 6" cover and 6" depth
19	Revised to show 6" cover and 6" depth
20	Revised to show 6" cover and 6" depth
21	Revised to show 6" cover and 6" depth
22	Revised to show 6" cover and 6" depth
23	Revised to show 6" cover and 6" depth
24	Revised to show 6" cover and 6" depth
25	Revised to show 6" cover and 6" depth
26	Revised to show 6" cover and 6" depth
27	Revised to show 6" cover and 6" depth
28	Revised to show 6" cover and 6" depth
29	Revised to show 6" cover and 6" depth
30	Revised to show 6" cover and 6" depth
31	Revised to show 6" cover and 6" depth
32	Revised to show 6" cover and 6" depth
33	Revised to show 6" cover and 6" depth
34	Revised to show 6" cover and 6" depth
35	Revised to show 6" cover and 6" depth
36	Revised to show 6" cover and 6" depth
37	Revised to show 6" cover and 6" depth
38	Revised to show 6" cover and 6" depth
39	Revised to show 6" cover and 6" depth
40	Revised to show 6" cover and 6" depth
41	Revised to show 6" cover and 6" depth
42	Revised to show 6" cover and 6" depth
43	Revised to show 6" cover and 6" depth
44	Revised to show 6" cover and 6" depth
45	Revised to show 6" cover and 6" depth
46	Revised to show 6" cover and 6" depth
47	Revised to show 6" cover and 6" depth
48	Revised to show 6" cover and 6" depth
49	Revised to show 6" cover and 6" depth
50	Revised to show 6" cover and 6" depth
51	Revised to show 6" cover and 6" depth
52	Revised to show 6" cover and 6" depth
53	Revised to show 6" cover and 6" depth
54	Revised to show 6" cover and 6" depth
55	Revised to show 6" cover and 6" depth
56	Revised to show 6" cover and 6" depth
57	Revised to show 6" cover and 6" depth
58	Revised to show 6" cover and 6" depth
59	Revised to show 6" cover and 6" depth
60	Revised to show 6" cover and 6" depth
61	Revised to show 6" cover and 6" depth
62	Revised to show 6" cover and 6" depth
63	Revised to show 6" cover and 6" depth
64	Revised to show 6" cover and 6" depth
65	Revised to show 6" cover and 6" depth
66	Revised to show 6" cover and 6" depth
67	Revised to show 6" cover and 6" depth
68	Revised to show 6" cover and 6" depth
69	Revised to show 6" cover and 6" depth
70	Revised to show 6" cover and 6" depth
71	Revised to show 6" cover and 6" depth
72	Revised to show 6" cover and 6" depth
73	Revised to show 6" cover and 6" depth
74	Revised to show 6" cover and 6" depth
75	Revised to show 6" cover and 6" depth
76	Revised to show 6" cover and 6" depth
77	Revised to show 6" cover and 6" depth
78	Revised to show 6" cover and 6" depth
79	Revised to show 6" cover and 6" depth
80	Revised to show 6" cover and 6" depth
81	Revised to show 6" cover and 6" depth
82	Revised to show 6" cover and 6" depth
83	Revised to show 6" cover and 6" depth
84	Revised to show 6" cover and 6" depth
85	Revised to show 6" cover and 6" depth
86	Revised to show 6" cover and 6" depth
87	Revised to show 6" cover and 6" depth
88	Revised to show 6" cover and 6" depth
89	Revised to show 6" cover and 6" depth
90	Revised to show 6" cover and 6" depth
91	Revised to show 6" cover and 6" depth
92	Revised to show 6" cover and 6" depth
93	Revised to show 6" cover and 6" depth
94	Revised to show 6" cover and 6" depth
95	Revised to show 6" cover and 6" depth
96	Revised to show 6" cover and 6" depth
97	Revised to show 6" cover and 6" depth
98	Revised to show 6" cover and 6" depth
99	Revised to show 6" cover and 6" depth
100	Revised to show 6" cover and 6" depth

CC 3020

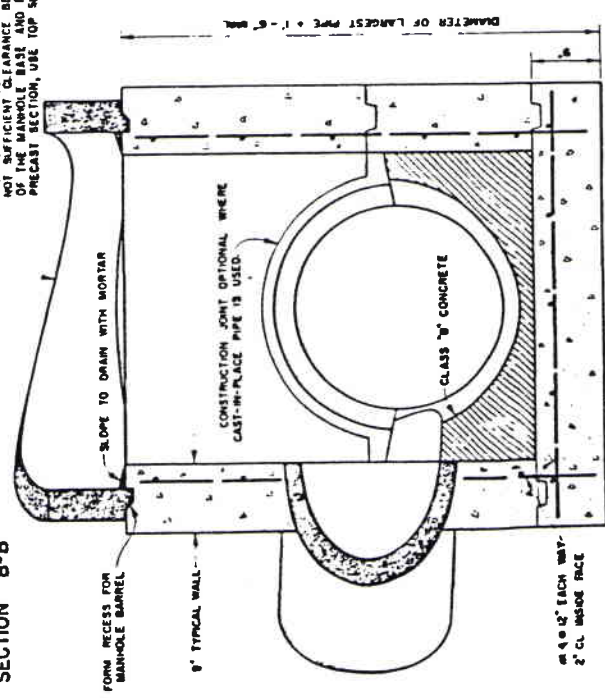


PLAN

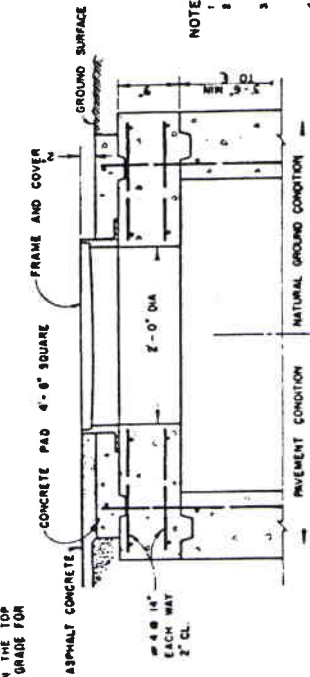
SECTION B-B



PLAN



SECTION A-A



SECTION C-C

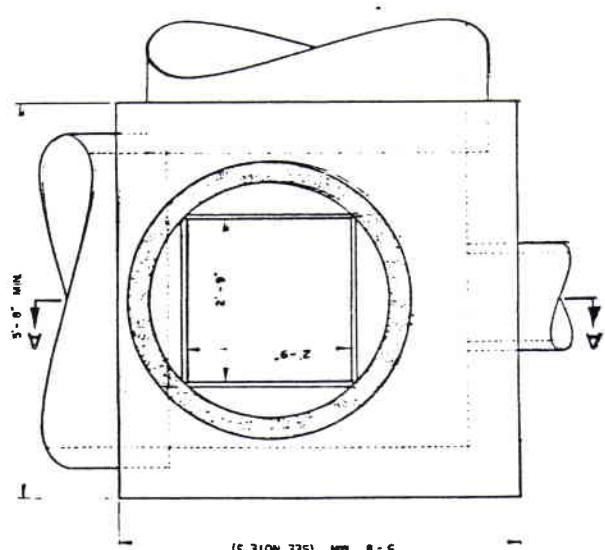
TOP SLAB

- NOTES:
- 1 ALL REINFORCED CONCRETE SHALL BE CLASS "A".
 - 2 REINFORCING SHALL BE OPTIMUM GRADE, UNLESS OTHERWISE SPECIFIED.
 - 3 LOCATIONS ARE SUBJECT TO THE APPROVAL OF THE ENGINEER.
 - 4 SET DIMENSIONS ARE 1/2" ± 3/4".
 - 5 INLET AND OUTLET PIPES SHALL NOT INTERCEPT A MANHOLE BASE.
 - 6 MANHOLE BASE SHALL BE CAST-IN-PLACE CONCRETE TO BE CAST IN PLACE PRIOR TO THE CASTING OF THE TOP SLAB.
 - 7 TYPE "M" MANHOLE BASE (SEE SHEET CC 3022), USE A MANHOLE BASE (SEE SHEET CC 3020), ARE FOR USE WITH PIPES TO 18" DIAMETER AND WHERE THERE IS SUFFICIENT CLEARANCE BETWEEN THE TOP OF THE MANHOLE BASE AND FINISH GRADE.
 - 8 WHEN PLACING A TYPE "M" OR TYPE "C" WALE OPENING IN A CONCRETE SLAB SHALL CONFORM TO THE ABOVE DIMENSIONS OF THE WALE TO BE USED.
 - 9 FOR DETAILS OF PRECAST MANHOLE, SEE STANDARD PLAN CC 3020.
 - 10 FOR DETAILS OF MANHOLE FRAME AND COVER, SEE STANDARD PLAN CC 3021.

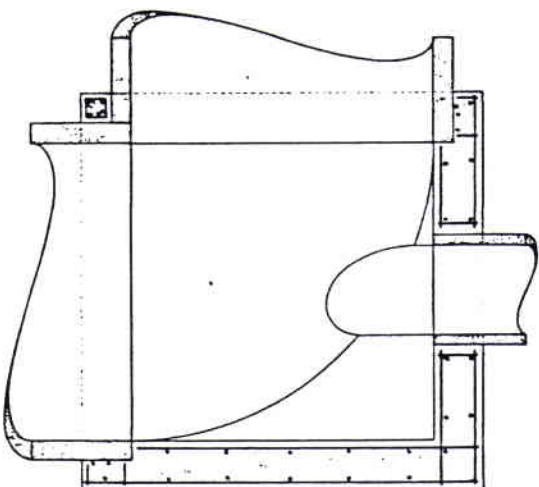
CONTRA COSTA COUNTY PUBLIC WORKS DEPARTMENT MARTINEZ, CALIFORNIA	
STANDARD PLAN TYPE "II" MANHOLE BASE	
NO.	REVISION DESCRIPTION
1	12-10-78 REV. SHEET 5
2	11-17-78 OCTOBER 19, 1982
3	BY DRAWN BY: J.C.C. CHECKED BY: J.C.C.

APPROVED *Max* 12/16/65
 PUBLIC WORKS DIRECTOR - R.E. CERT. NO. 3709

CC 3021

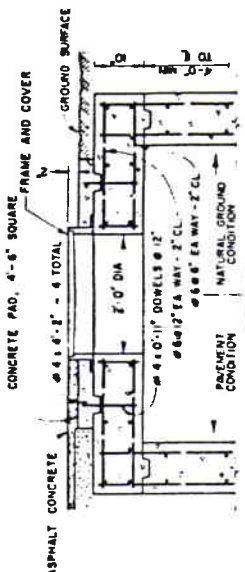


5'-0" MIN (SEE NOTE 3)



PLAN SECTION

PRECAST MANHOLE SECTION WHERE THERE IS NOT SUFFICIENT CLEARANCE BETWEEN THE TOP OF THE MANHOLE BASE AND FINISH GRADE FOR A PRECAST SECTION AND MANHOLE COVER FRAME, USE IN TOP 1/4 IN.

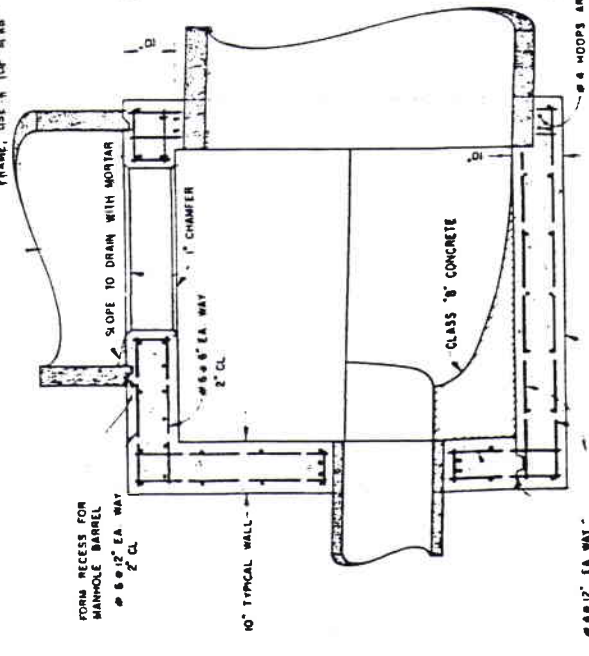


SECTION

TOP SLAB

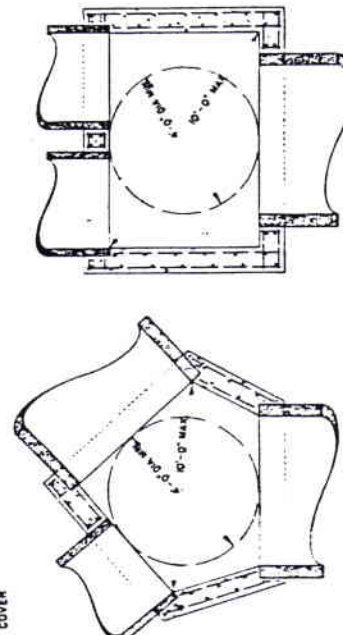
USE TOP SLAB

WHERE THERE IS NOT SUFFICIENT CLEARANCE BETWEEN THE TOP OF THE MANHOLE BASE AND FINISH GRADE SUCH A PRECAST SECTION AND MANHOLE COVER FRAME SHALL BE USED. THE PRECAST SECTION AND TOP SLAB SHALL CONFORM TO THE MANHOLE BASE TO THE INSIDE DIMENSIONS OF THE WELL TO BE USED.



SECTION A-A

BOTTOM SLAB TO BE IN PLACE PRIOR TO CONSTRUCTION OF PIPE WHERE CAST-IN-PLACE PIPE IS USED



PLAN SECTION

SPECIAL APPLICATIONS OF TYPE "III" MANHOLE BASES

WHEN UNUSUAL CIRCUMSTANCES, SUCH AS EXCESSIVE SLOPE OR PARALLEL PIPES PREVENT THE USE OF A NORMAL TYPE "III" MANHOLE BASE, THE WALLS MAY BE (EMPHASIZED OR RELOCATED TO ACCOMMODATE THE PIPES, PROVIDING THE FOLLOWING CRITERIA ARE MET):

1. A FOUR FOOT DIAMETER CIRCLE WILL LAY FLAT ON THE FLOOR AS SHOWN
2. THE MAXIMUM DISTANCE BETWEEN ANY TWO INSIDE CORNERS SHALL BE 40'-0" OR LESS
3. THE MAXIMUM DISTANCE BETWEEN ANY TWO INSIDE CORNERS SHALL REMAIN THE SAME AS FOR A NORMAL TYPE "III" MANHOLE BASE
4. NO PIPE SHALL EXCEED 60" INSIDE DIAMETER
5. ANY ONE OF THESE CRITERIA CANNOT BE MET, A SPECIAL DESIGN WILL BE REQUIRED

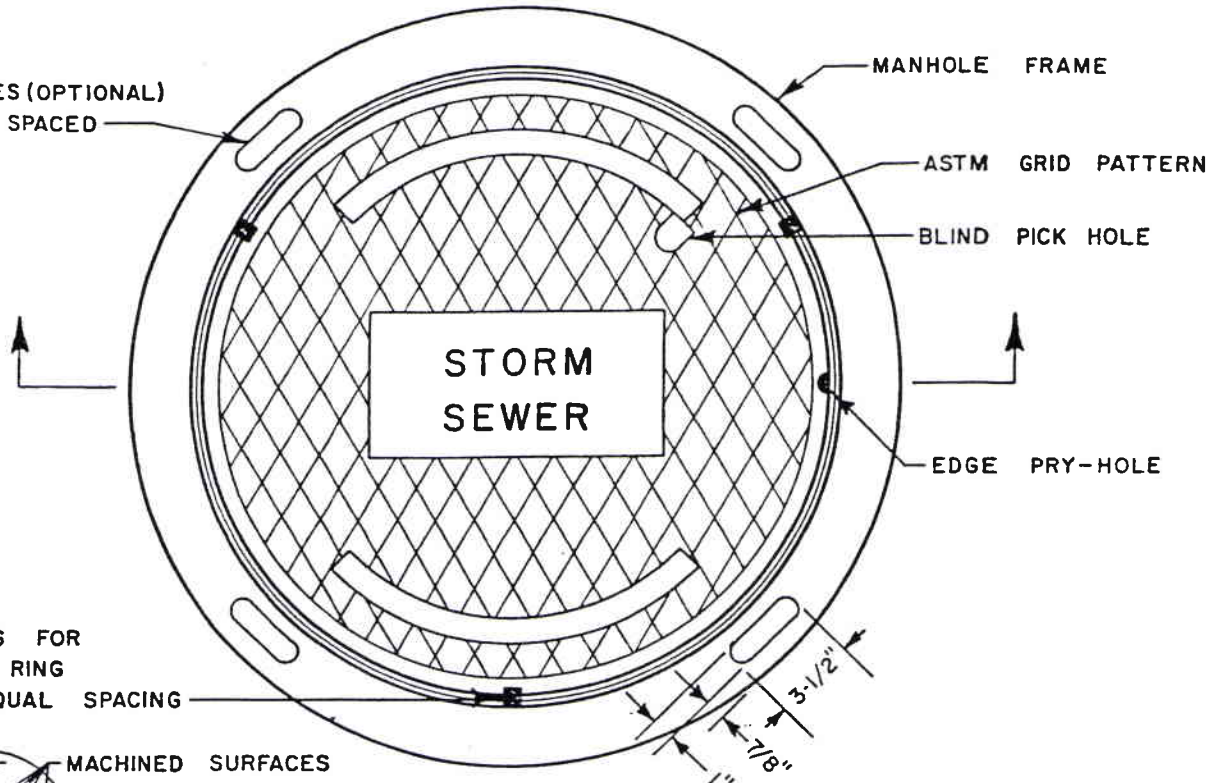
- NOTES:
1. ALL REINFORCED CONCRETE SHALL BE CLASS "A"
 2. CONSTRUCTION JOINTS ARE OPTIONAL WHERE SHOWN OTHER LOCATIONS ARE SUBJECT TO THE APPROVAL OF THE ENGINEER
 3. WELLS AND OUTLET PIPES SHALL NOT INTERSECT A MANHOLE BASE THROUGH A CORNER IF THE SLOPE ANGLE IS TOO GREAT TO PERMIT THE OPENING TO BE MADE IN A SINGLE WALL. THE WALL SHALL BE REINFORCED OR RELOCATED AS EXPLAINED AT LEFT
 4. PIPES TO 24" DIAMETER AND WELLS TO 18" DIAMETER SHALL COVER TO USE A MINIMUM LENGTH MANHOLE BARREL, EXCEPTING CONDITIONS WHERE PIPES TO 48" DIAMETER BASES AND MANHOLE BASES ARE FOR PIPES TO 60" IN DIAMETER MANHOLE BASES FOR PIPES LARGER THAN 60" IN DIAMETER SHALL REQUIRE A SPECIAL DESIGN
 5. FOR DETAILS OF PRECAST MANHOLE, SEE STANDARD PLAN CC 1070
 6. FOR DETAILS OF MANHOLE FRAME AND COVER, SEE STANDARD PLAN CC 1024

CONTRA COSTA COUNTY PUBLIC WORKS DEPARTMENT	
STANDARD PLAN	
TYPE "III" MANHOLE BASE	
DATE: 7-1-70	DESIGNED BY: J. L. MOYER
BY: DRAWN BY: [Signature]	CHECKED BY: [Signature]
NO. 3022	REVISION DESCRIPTION

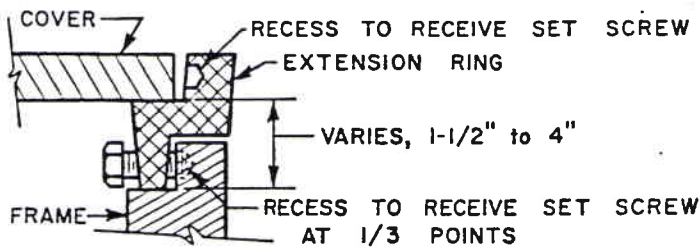
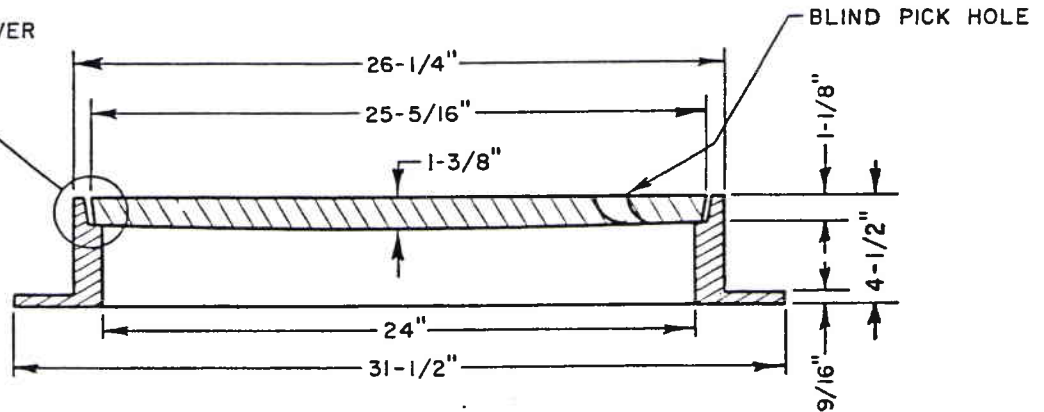
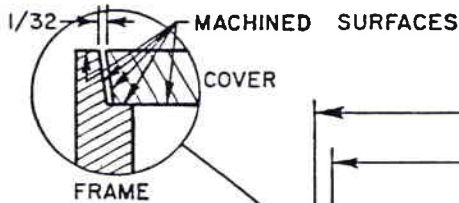
APPROVED: [Signature]

PUBLIC WORKS DIRECTOR - R E CENT NO 5709

GROUT HOLES (OPTIONAL)
4 - EQUALLY SPACED



SET SCREWS FOR
EXTENSION RING
3-REQ,D EQUAL SPACING



**TYPICAL CAST IRON
EXTENSION RING (NOT TO SCALE)**

NOTES

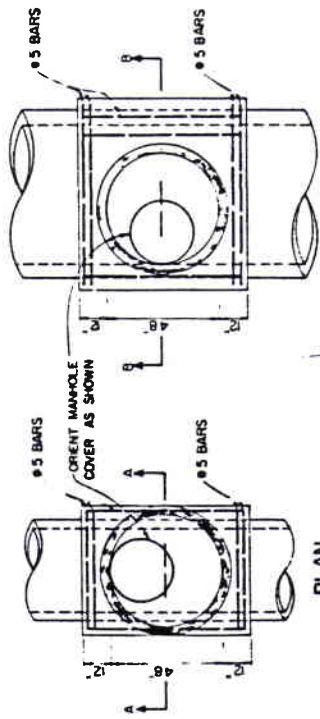
1. MANHOLE FRAME AND COVER SHALL BE PHOENIX IRON WORKS(OAKLAND) MODEL P-1090 OR PINKERTON FOUNDRY(LODI) MODEL A-640 OR APPROVED EQUAL.

CONTRA COSTA COUNTY
PUBLIC WORKS DEPARTMENT
MARTINEZ CALIFORNIA

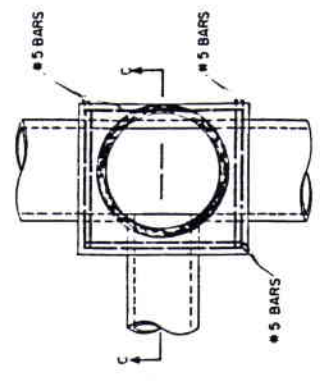
MANHOLE FRAME AND COVER

APPROVED: <i>Ramon L. Chive</i> PUBLIC WORKS DIRECTOR — R. E. CERT. NO. 7957	
Scale: 1/8" = 1"	Date: December 1976
Drawn by: FERNANDEZ ✓	File No.:
Checked by: TONELLI	CC 3024

APPROVED *[Signature]* PUBLIC WORKS DIRECTOR RE CERT NO 86670



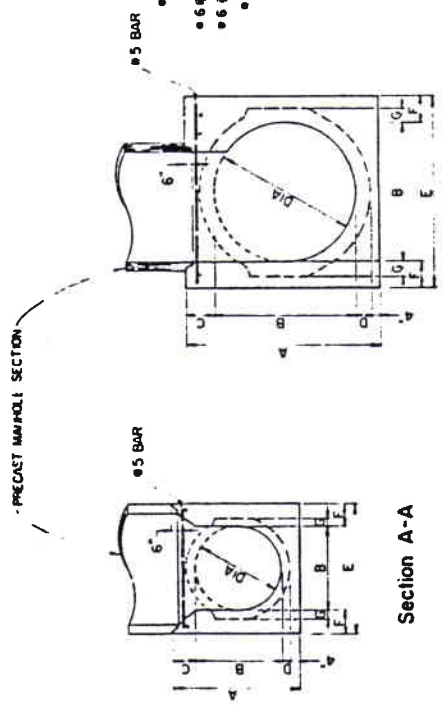
PLAN
TYPICAL MANHOLE BASE
30" thru 48" DIA.



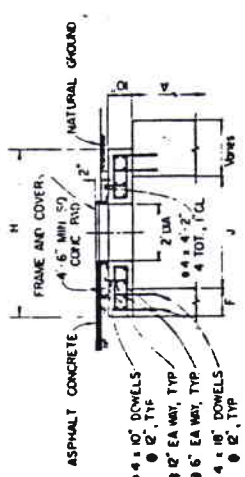
PLAN
TYPICAL LATERAL CONNECTION

DIMENSION TABLE										
DIA	A	B	C	D	E	F	G	H	J	K
30"	46"	30"	9"	3"	56"	13"	3"	36"	30"	
36"	53"	36"	9 1/2"	3 1/2"	56"	10"	3 1/2"	56"	36"	
42"	60"	42"	10"	4"	60"	9"	4"	60"	42"	
48"	68"	48"	11"	5"	66"	9"	5"	60"	48"	
54"	75"	54"	11 1/2"	5 1/2"	75"	10 1/2"	5 1/2"	69"	48"	
60"	82"	60"	12"	6"	82"	11"	6"	70"	48"	
66"	89"	66"	12 1/2"	6 1/2"	89"	11 1/2"	6 1/2"	71"	48"	
72"	96"	72"	13"	7"	96"	12"	7"	72"	48"	
84"	110"	84"	14"	8"	110"	13"	8"	74"	48"	
96"	124"	96"	15"	9"	124"	14"	9"	76"	48"	
120"	154"	120"	18"	12"	154"	17"	12"	82"	48"	

USE OF AN 'A' > 154" REQUIRES A SPECIAL DESIGN

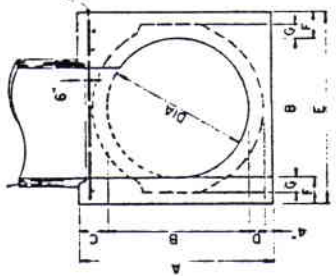


Section A-A

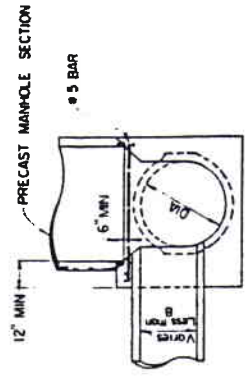


TOP SLAB
Section

- USE TOP SLAB:
- WHERE THERE IS NOT SUFFICIENT CLEARANCE BETWEEN THE TOP OF THE MANHOLE BASE AND FINISH GRADE FOR A TYPICAL CAST MANHOLE SECTION
 - DIMENSION 'A' MAY BE INCREASED BEYOND THAT SPECIFIED IN ORDER TO CONFORM TO FINISH GRADE. USE OF A LARGER 'A' WILL REQUIRE MODIFYING THE CORNER/JACKING DIMENSIONS IN ACCORDANCE WITH THE DIMENSION TABLE
 - WHEN PLACING A TYPE 'A' OR A TYPE 'C' INLET ON A TYPE 'B' MANHOLE BASE THE OPENING IN THE TOP SLAB SHALL CONFORM TO THE INSIDE DIMENSION OF THE INLET BEING PLACED



Section B-B



Section C-C

- NOTES
- ALL CONCRETE SHALL BE CLASS A
 - CLEARANCE SHALL BE 2" FOR ALL STEEL, UNLESS OTHERWISE NOTED
 - THE TYPE 'B' MANHOLE BASE, CC 3023, SHALL BE USED ONLY ON STRAIGHT RUNS OF CIPP OF THE SAME DIAMETER
 - FOR DETAILS OF PRECAST MANHOLE, SEE STANDARD PLAN CC 3020
 - FOR DETAILS OF MANHOLE FRAME AND COVER, SEE STANDARD PLAN CC 3024

CONTRA COSTA COUNTY PUBLIC WORKS DEPARTMENT
TYPE IV MANHOLE BASES
CC 3025

