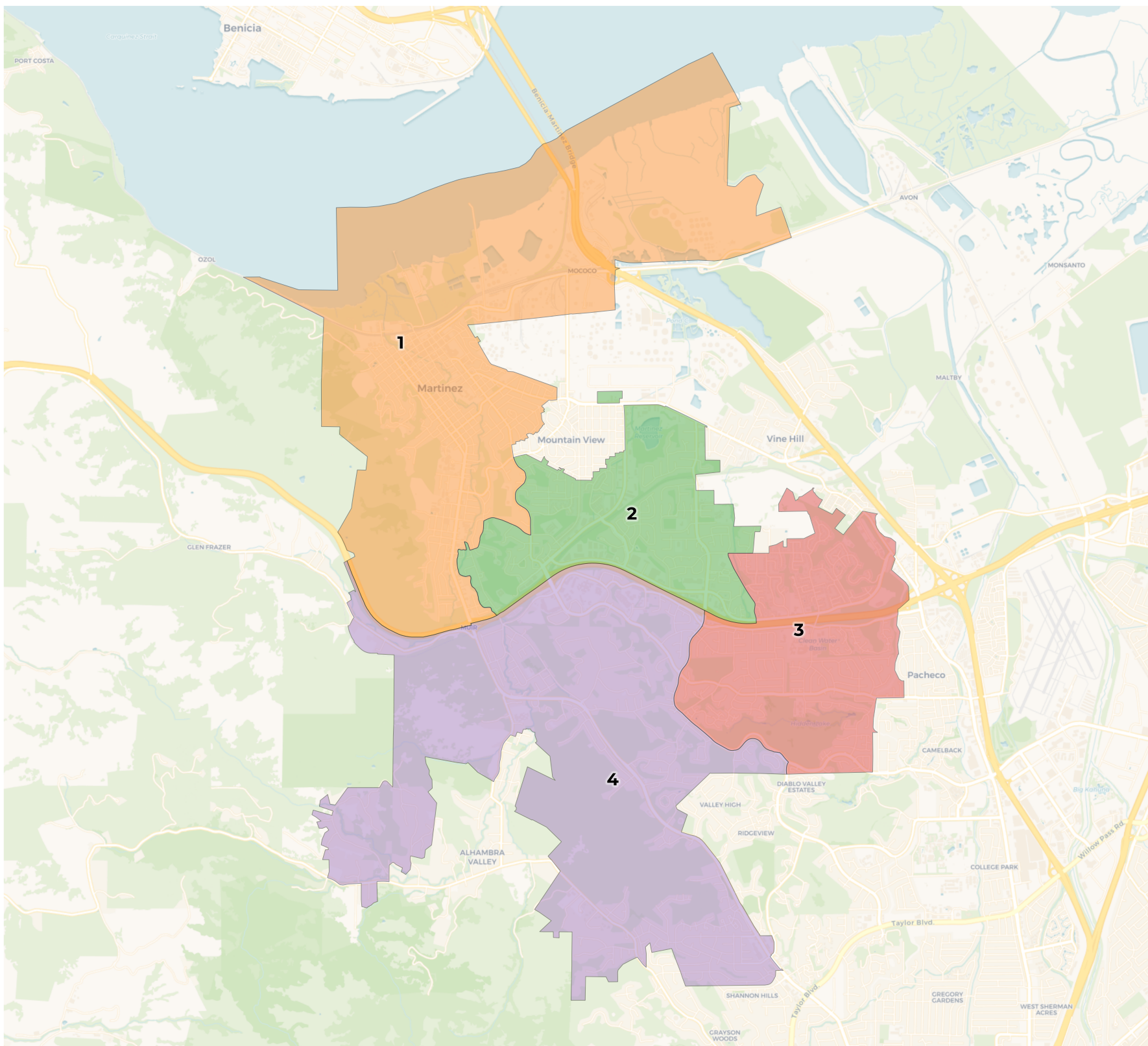


# REDISTRICTING PARTNERS

## City of Martinez Draft Map A3



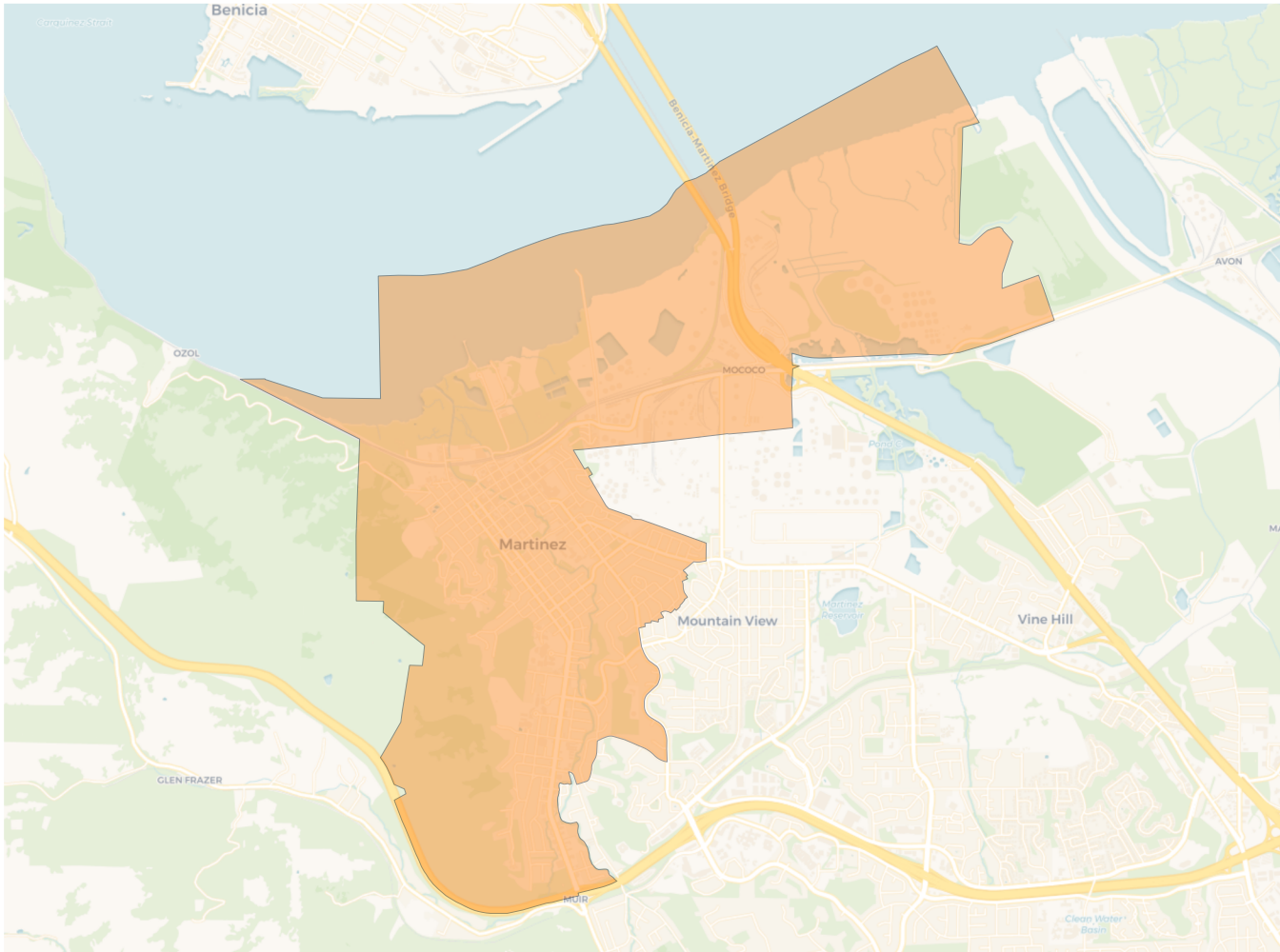
**2020 Census**

	1	2	3	4
Population	9,299	9,261	9,558	9,231
Deviation	-38	-76	221	-106
Deviation %	-0.4%	-0.8%	2.4%	-1.1%
Other	6,311	6,091	6,486	6,696
Other %	67.9%	65.8%	67.9%	72.5%
Latino	1,958	1,763	1,515	1,447
Latino %	21.1%	19.0%	15.9%	15.7%
Asian	429	1,146	1,306	866
Asian %	4.6%	12.4%	13.7%	9.4%
Black	601	261	251	222
Black %	6.5%	2.8%	2.6%	2.4%

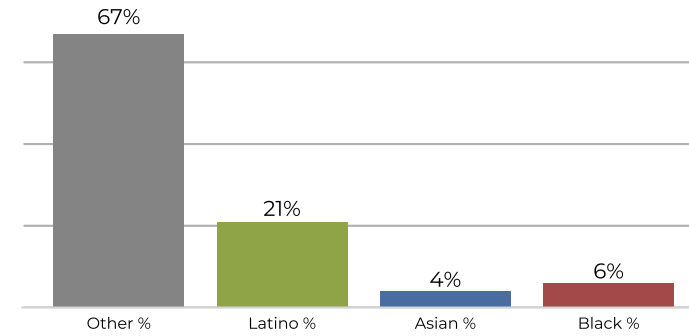
**Citizen Voting Age Population (CVAP)**

	1	2	3	4
Total CVAP	7,527	6,964	6,805	7,593
Other CVAP	5,650	5,453	4,959	5,937
Other CVAP %	75.1%	78.3%	72.9%	78.2%
Latino CVAP	1,150	849	829	864
Latino CVAP %	15.3%	12.2%	12.2%	11.4%
Asian CVAP	418	424	787	614
Asian CVAP %	5.6%	6.1%	11.6%	8.1%
Black CVAP	309	238	230	178
Black CVAP %	4.1%	3.4%	3.4%	2.3%

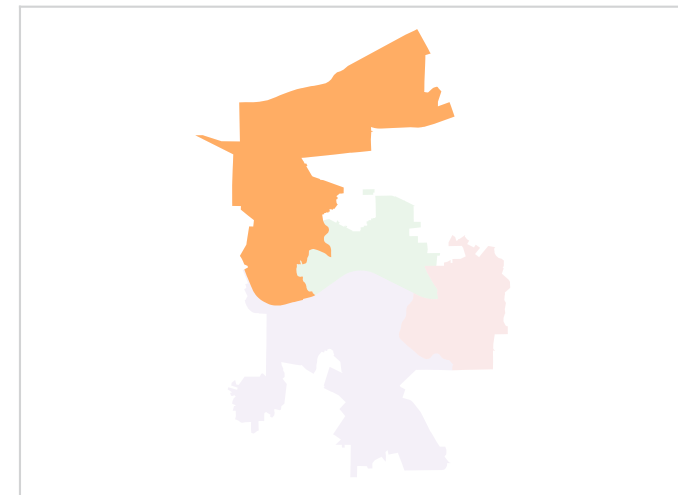
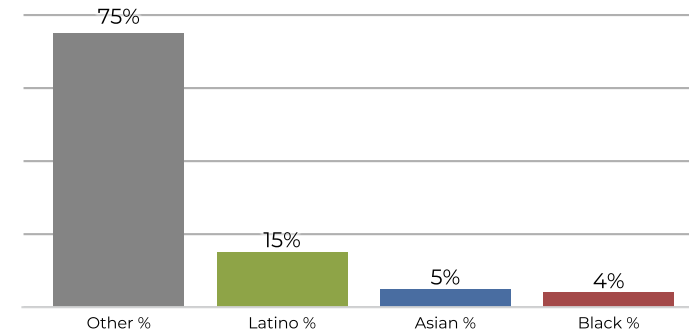
**District 1**



**2020 Census**

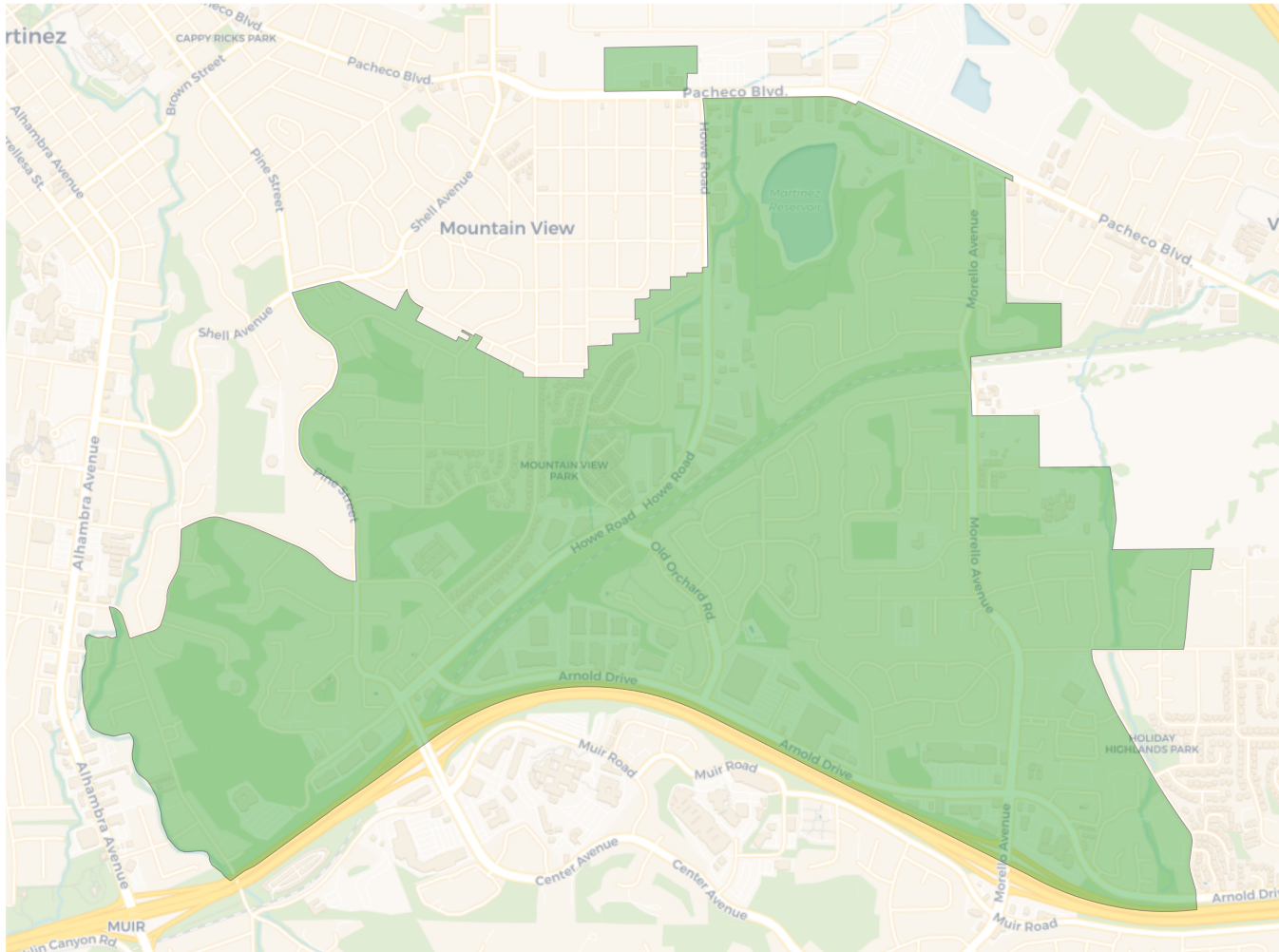


**Citizen Voting Age Population**

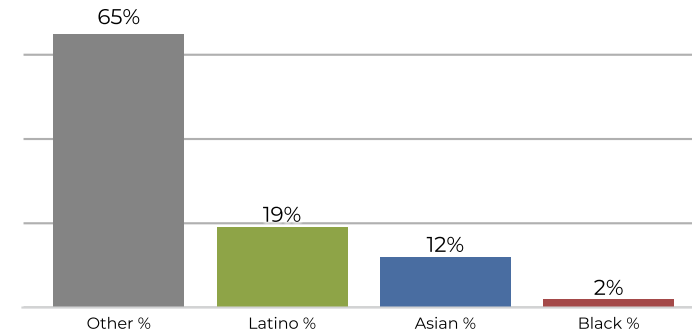


Population	Deviation	Deviation %	Other	Other %	Latino	Latino %	Asian	Asian %	Black	Black %
9,299	-38	-0.4%	6,311	67.9%	1,958	21.1%	429	4.6%	601	6.5%
Total CVAP	Other CVAP	Other CVAP %	Latino CVAP	Latino CVAP %	Asian CVAP	Asian CVAP %	Black CVAP	Black CVAP %		
7,527	5,650	75.1%	1,150	15.3%	418	5.6%	309	4.1%		

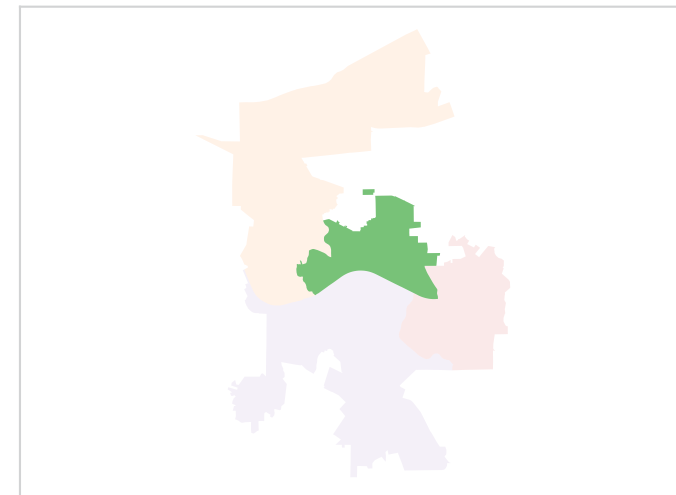
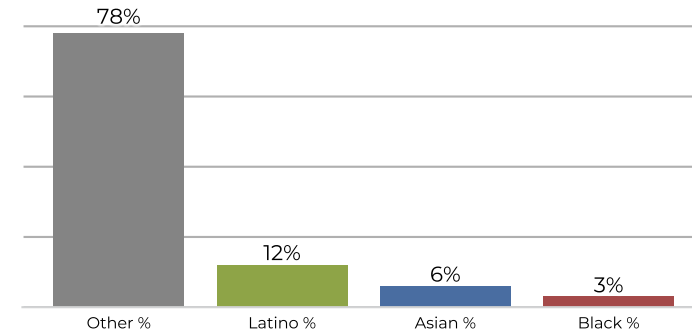
**District 2**



**2020 Census**

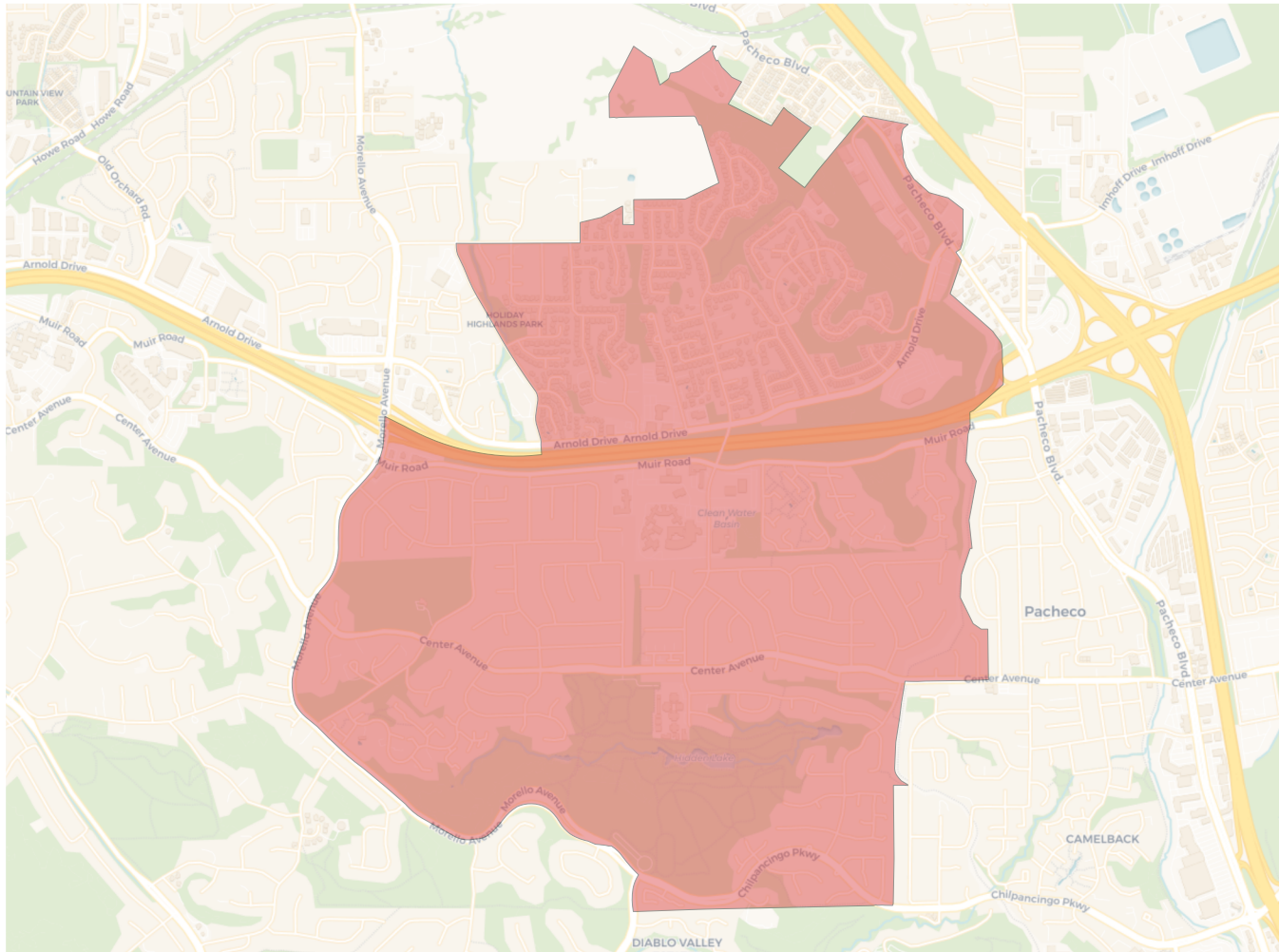


**Citizen Voting Age Population**

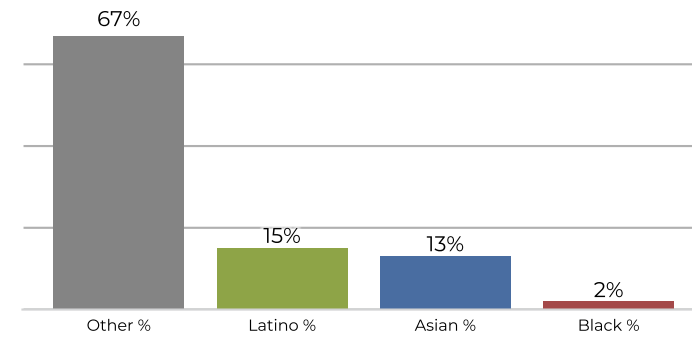


Population	Deviation	Deviation %	Other	Other %	Latino	Latino %	Asian	Asian %	Black	Black %
9,261	-76	-0.8%	6,091	65.8%	1,763	19.0%	1,146	12.4%	261	2.8%
Total CVAP	Other CVAP	Other CVAP %	Latino CVAP	Latino CVAP %	Asian CVAP	Asian CVAP %	Black CVAP	Black CVAP %		
6,964	5,453	78.3%	849	12.2%	424	6.1%	238	3.4%		

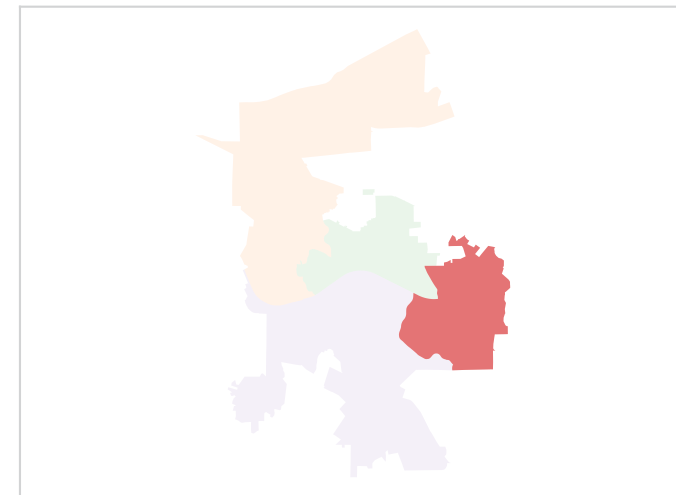
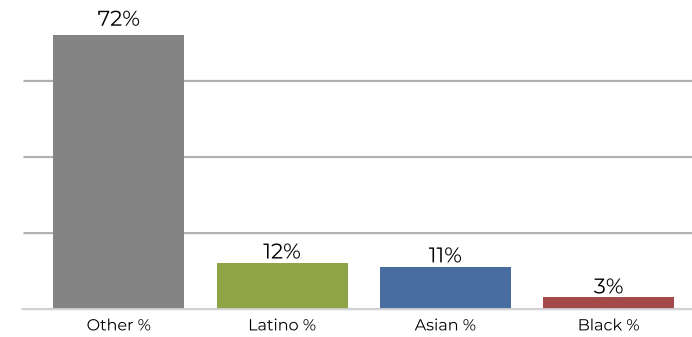
**District 3**



**2020 Census**

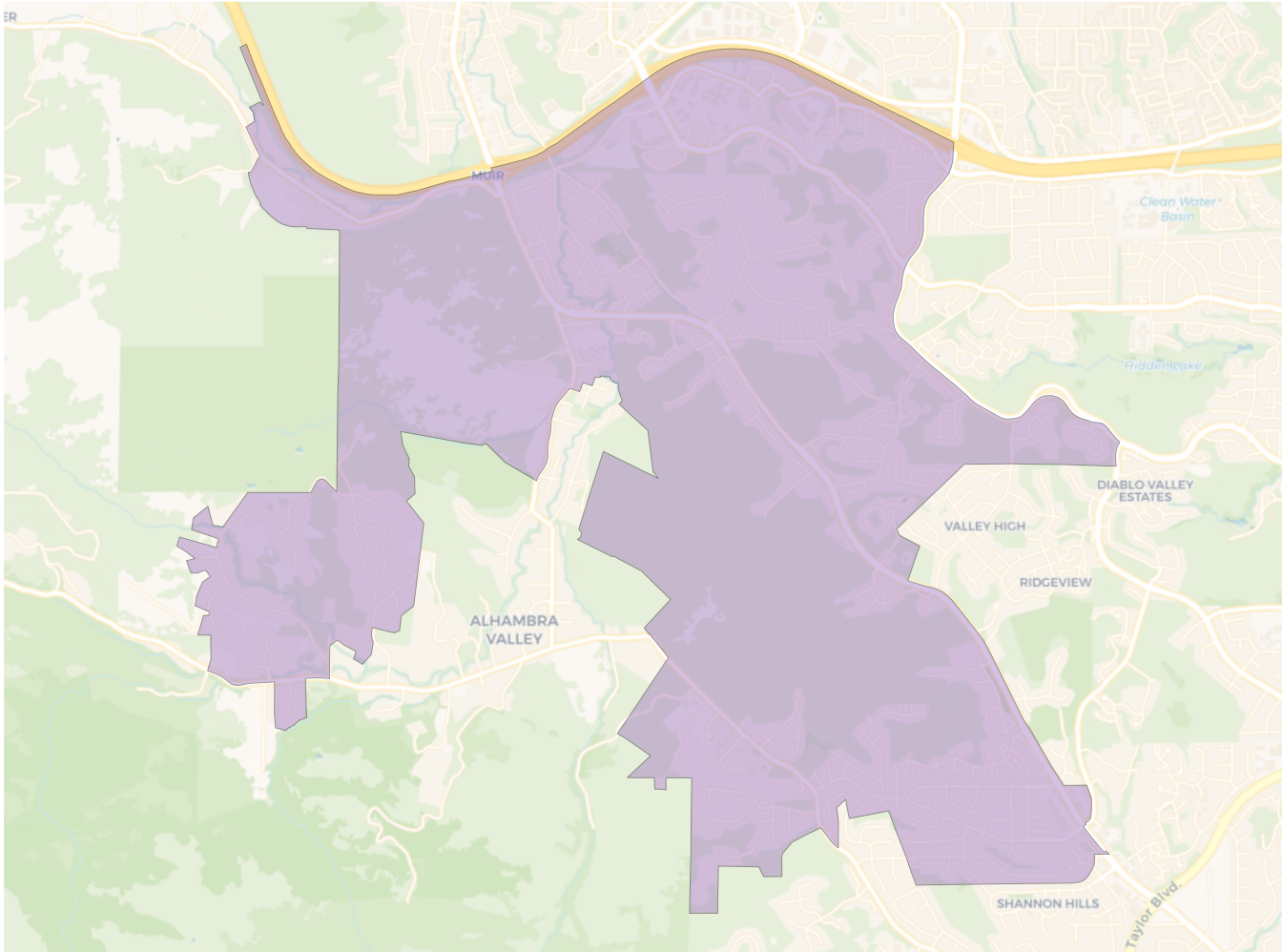


**Citizen Voting Age Population**

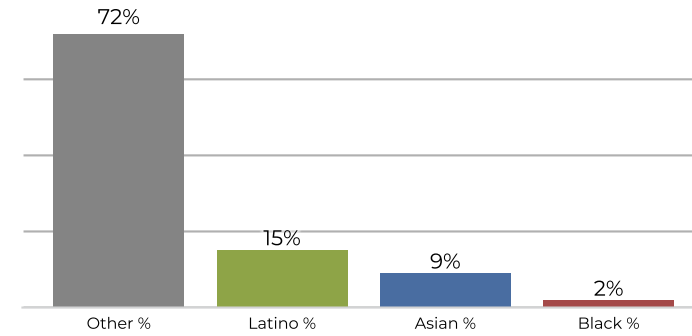


Population	Deviation	Deviation %	Other	Other %	Latino	Latino %	Asian	Asian %	Black	Black %
9,558	221	2.4%	6,486	67.9%	1,515	15.9%	1,306	13.7%	251	2.6%
Total CVAP	Other CVAP	Other CVAP %	Latino CVAP	Latino CVAP %	Asian CVAP	Asian CVAP %	Black CVAP	Black CVAP %		
6,805	4,959	72.9%	829	12.2%	787	11.6%	230	3.4%		

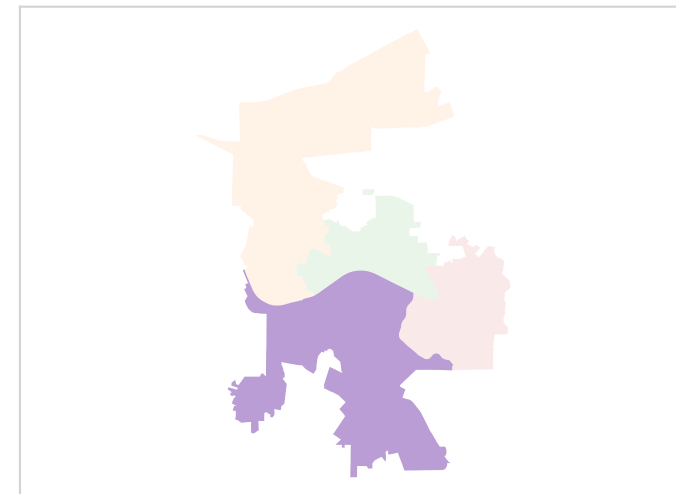
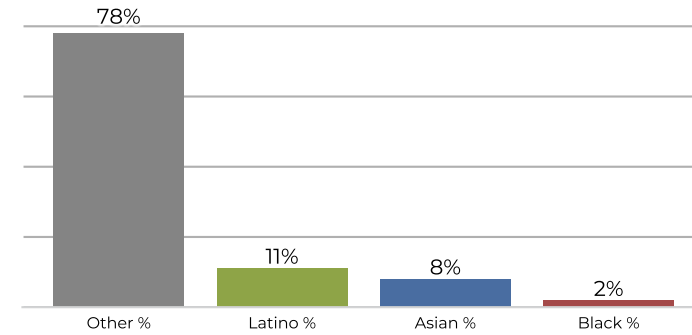
**District 4**



**2020 Census**



**Citizen Voting Age Population**



Population	Deviation	Deviation %	Other	Other %	Latino	Latino %	Asian	Asian %	Black	Black %
9,231	-106	-1.1%	6,696	72.5%	1,447	15.7%	866	9.4%	222	2.4%
Total CVAP	Other CVAP	Other CVAP %	Latino CVAP	Latino CVAP %	Asian CVAP	Asian CVAP %	Black CVAP	Black CVAP %		
7,593	5,937	78.2%	864	11.4%	614	8.1%	178	2.3%		